

Thorlabs CC6000 Software

Version 8.2 Build 1.23.12.4

(Copyright ©2022, Thorlabs Vytran)

Use this software to operate the CC6000 Portable Connector End Face Geometry Interferometer (only for models with serial number greater than 1200)

RELEASE NOTES:

Vers 8.2:

- Improved Fiber Location for Calibration.
- Better compatibility between Sentech and Basler Cameras.

Vers 8.1

- Bug in Reference Tool Calibration Procedure fixed.
- Display issue when using high resolution monitors fixed.
- Added driver installation and support for internal Basler camera (prompted by obsoleting of currently used Sentech camera).
- Incorporated support for duplex LC-APC connectors with key at 90-deg-rotation from standard position - denoted in the industry as the "Uniboot pull-boot LC-APC-Duplex" type product.
- Improved fiber detection in Reference Tool calibration.
- Added warning to user message, appearing at completion of Reference Tool calibration, for user to check that fiber detection was successful (as evidenced by location of circle overlay).
- Added missing units to Height column label in Excel file export of data.
- Added prevention of deletion or modification to factory-supplied Administrator login.
- Eliminated change to login password that could occur if Windows login association was changed in a login configuration.

Vers 7.5

- Replaced all Norland Products references with Thorlabs.
- Updated core database engine version from SQL Server Express 2012 to 2014.
- Changed default program login.
- Improved software installation process.
- Fixed resource leak related to installation of Sentech Camera driver.

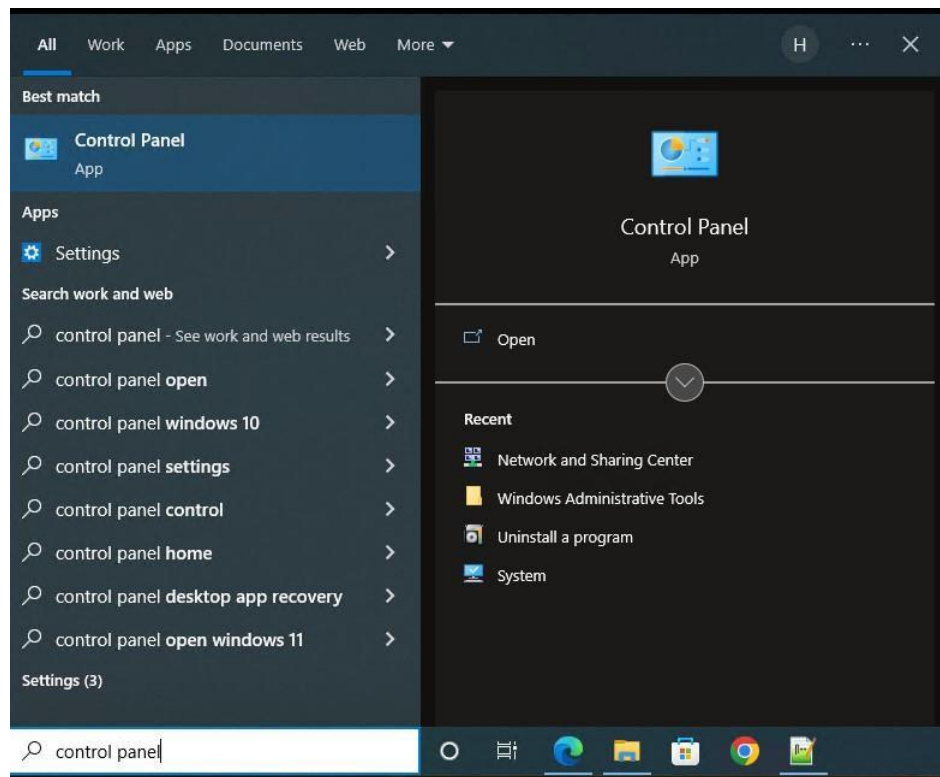
SUPPORTED PLATFORMS:

This software was verified with the following platforms:

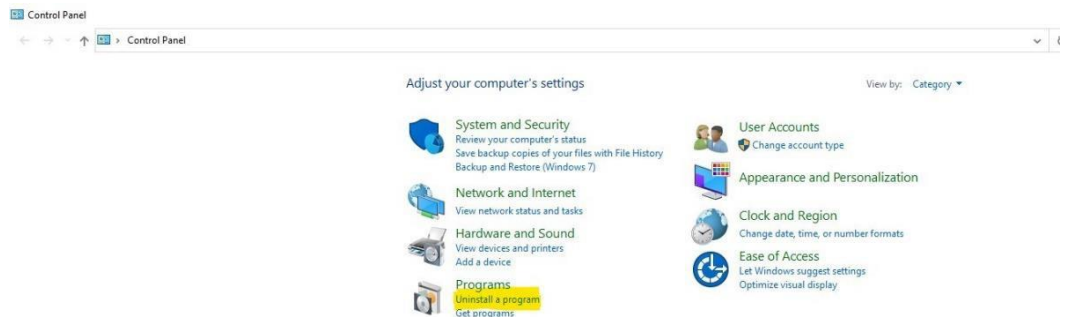
- Windows 7 (32-bit and 64-bit versions)
- Windows 8 (32-bit and 64-bit versions)
- Windows 10 (32-bit and 64-bit versions)

INSTALLATION INSTRUCTIONS:

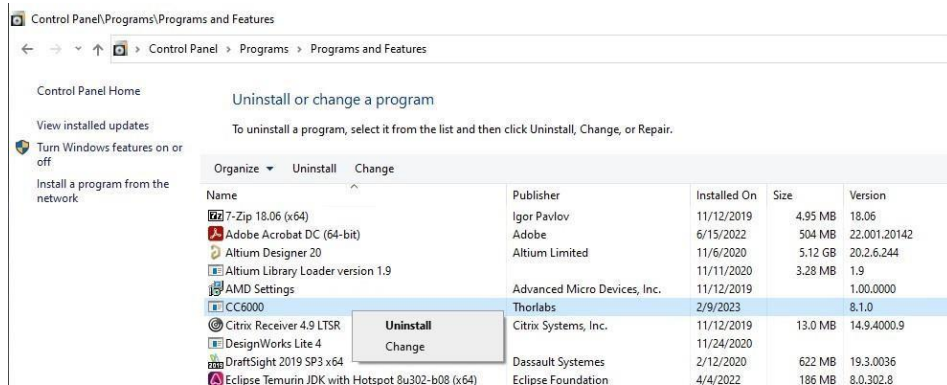
1. Download the compressed distribution of CC6000 software from the Thorlabs CC6000 web page to the computer to be used for CC6000 control and data storage.
 2. If a previous version of CC6000 software exists on the computer, please follow the steps below. If not, you can skip to step 3.
- In the search bar of Windows OS, type "Control Panel". Press "Open" in window that appears.



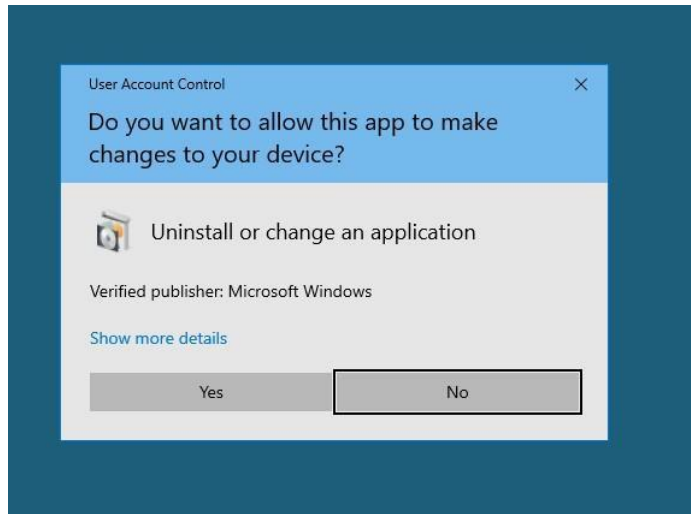
- In the Control Panel window, press "Uninstall a program".



- Program and Features window will appear, select CC6000 in the list and right click it. Select Uninstall in the menu that pops up.

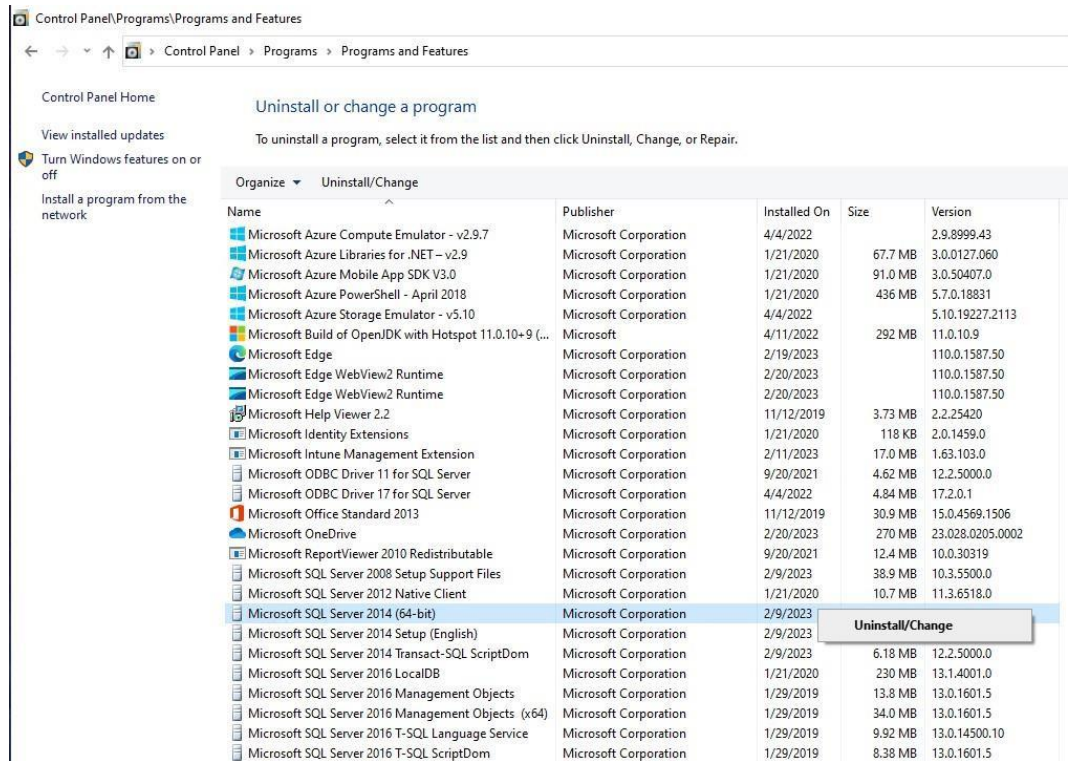


- After selecting Uninstall, if User Account Window pops up, please select "Yes" button.



- Select default options and when "Uninstall Complete" window appears select the "Finish" button.

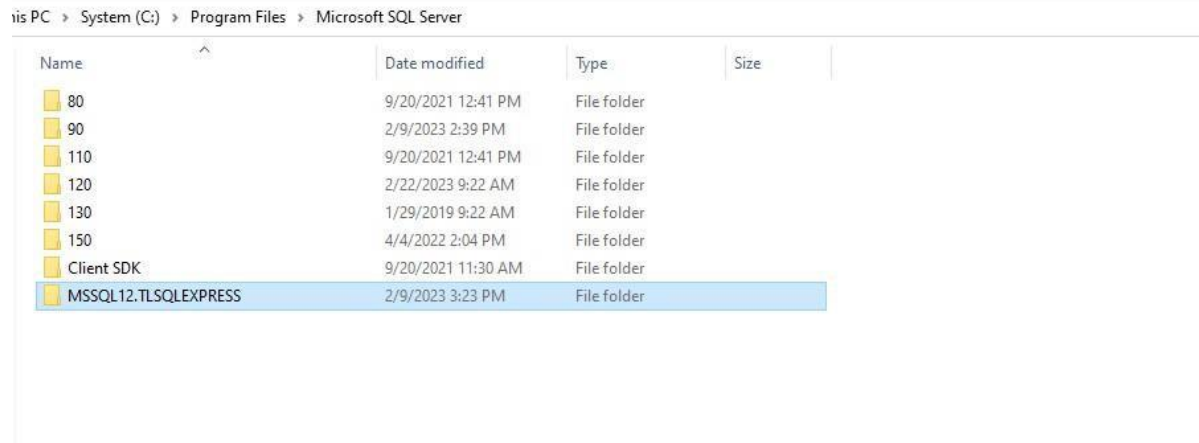
- After uninstallation of CC6000 software, back on the Program and Features window, select Microsoft SQL Server 2014(64-bit) and right click it. (64-bit) will only appear if it is 64-bit system. Select Uninstall/change in the menu that pops up.



- Select default options (Remove, Next, Select All, Remove) and once uninstalling completes, press the "Close" button.



- Navigate to C:\Program Files\Microsoft SQL Server and delete the folder "MSSQL12.TLSQLEXPRESS".



3. Create a folder just below the computer's root directory (e.g.; C:/CC6000) and extract the distribution ZIP file content to that folder.
4. Right-click the SETUP.EXE file and select "Run as Administrator".
5. Follow the instructions for software installation found in the CC6000 User Manual.